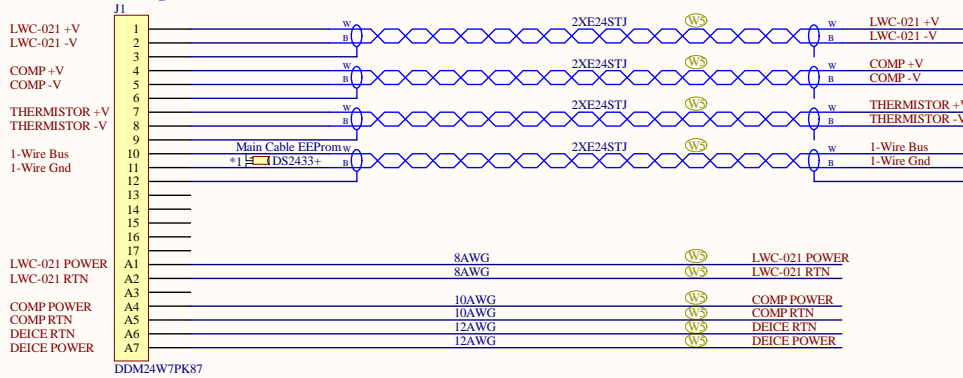
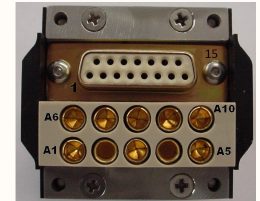
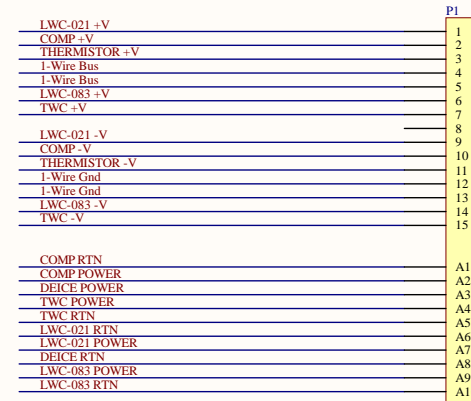


### Power Box Main End Small LWC/Comp/Deice

SEA Supplied 10' Length

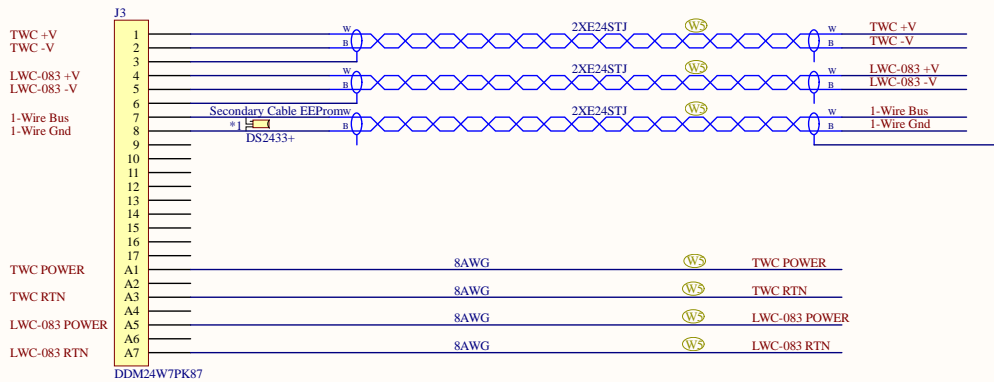


### Probe End



SEA-Multi-Conn

### Power Box Secondary End TWC/Large LWC



#### Revision Notes:

\*1 EEPROMs are for SEA and are not required.

B 4/30/14 - EEPROM note and wire type added  
C 11/29/16 - Typo fixed on 1-wire bus label

PROPRIETARY AND CONFIDENTIAL.  
THE INFORMATION CONTAINED IN  
THIS DRAWING IS THE SOLE  
PROPERTY OF SCIENCE  
ENGINEERING ASSOC., INC. ANY  
REPRODUCTION IN PART OR AS A  
WHOLE WITHOUT THE WRITTEN  
PERMISSION OF SCIENCE  
ENGINEERING ASSOC., INC. IS  
PROHIBITED.

- W - MIL-W-22759/11 Wire
- W - M27500-22RC2S09 Twisted Shielded Cable
- W - MIL-W-16878/4 Wire or MIL-W-16878/5 Wire for 10AWG or larger

|   |   |   |
|---|---|---|
| <br><b>SEA Inc.</b><br>Real Time Data Acquisition Systems |   |   |
| Title<br><b>WCM Control Cable-1</b>                       |   |   |
| Size: B<br>Document #: 400230-E<br>Part/PCB #:            | Revision: C<br>Date: 11/29/2016<br>Time: 8:10:31 AM | Science Engineering Associates Inc.<br>114C Mansfield Hollow Road<br>Mansfield Center, CT 06250<br>Phone : 860-450-1717<br>Fax : 860-450-1707 |
| File: 400230-E.Schdoc   Sheet 1 of 1                      |   |   |